



Excel FR | Blind Fabric

Roller Blinds | Vertical Louvre Blinds

Excel FR | Fabric Specification

Excel FR is designed for robust and effective privacy and shading. Designed to be used with roller blinds and vertical louvre blinds it is an all-round reliable fabric with a natural texture suited to any interior.

A full range of colours and **Biosafe®** anti-bacterial properties makes this range ideal for specification and use across a broad scope of projects, particularly

- Commercial Offices
- Schools and Colleges
- Healthcare

HELPFUL TIP! The characteristics and performance of the blinds will greatly depend on the colour chosen. Darker colours are excellent at controlling glare but they absorb and transmit heat more than lighter colours. Lighter colours are excellent at rejecting heat but under bright conditions can increase glare on computer screens. If you need advice in specifying call the InterLace sales office on **0800 619 6999** for advice or email your requirements to sales@interlaceblinds.com.

HELPFUL TIP! Horizontal fabric joins will be introduced where both dimensions of a blind exceed the maximum usable width of the fabric. The joins will normally be situated as near to the top of the blind as possible. Joins are visible and are either stitched or heat welded. If you have a particular query about having joins on your blinds please call the InterLace sales office on **0800 619 6999** for advice or email your requirements to sales@interlaceblinds.com.

| | |
|----------------------------|--|
| Fabric Composition | 100% Polyester |
| Louvre Widths | 127mm (5") / 89mm (3.5") |
| Roller Fabric Width | 2300mm |
| Fabric Thickness | 0.30mm |
| Fabric Weight | 220 g/m2 |
| Fire Retardancy | Conforms to BS5867, Part 2: Type B 2008 |
| Shading Standard | Suitable for computer environments |
| Solar Shading | |
| Moisture Resistance | Suitable for moist conditions |
| Biosafe® | Contains effective anti-bacterial and anti-fungal properties |
| Care Instructions | Wipe with damp sponge |

| Colour | Solar Transmittance % | Optical Transmittance % | Solar Reflection % | Ultraviolet Protection % | Absorption % | Optical Reflection % |
|------------|-----------------------|-------------------------|--------------------|--------------------------|--------------|----------------------|
| Black | 9 | 2 | 2 | 100 | 89 | 4 |
| Dark Grey | 9 | 6 | 13 | 100 | 78 | 16 |
| Light Grey | 7 | 3 | 48 | 100 | 45 | 52 |
| White | 16 | 15 | 72 | 100 | 12 | 84 |
| Red | 13 | 8 | 19 | 100 | 68 | 23 |
| Dark Green | 10 | 6 | 17 | 100 | 73 | 19 |
| Yellow | 16 | 11 | 43 | 100 | 41 | 49 |
| Royal | 9 | 6 | 10 | 100 | 81 | 12 |
| Light Blue | 16 | 13 | 45 | 100 | 39 | 53 |
| Dark Blue | 16 | 12 | 39 | 100 | 45 | 44 |
| Beige | 13 | 9 | 64 | 100 | 23 | 69 |

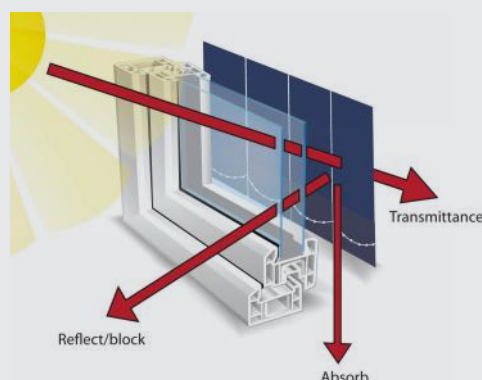
Shading Efficiency

Transmittance is the amount of light and heat transmitted beyond the fabric. The lower the amount, the greater the efficiency.

Block/reflect is the amount of heat and light that is blocked or reflected. The higher the amount, the greater the efficiency.

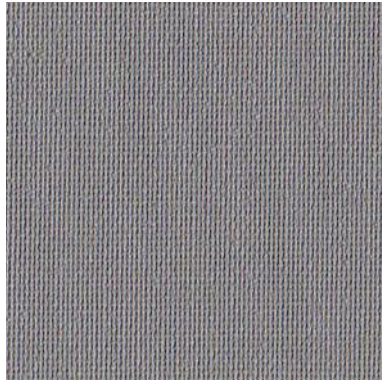
Absorption is the amount of heat and light absorbed in the fabric. The higher the amount, the lower the efficiency.

Ultraviolet protection illustrates how protective the fabric is in protecting against ultraviolet rays. The higher the amount, the greater the effectiveness.





Black



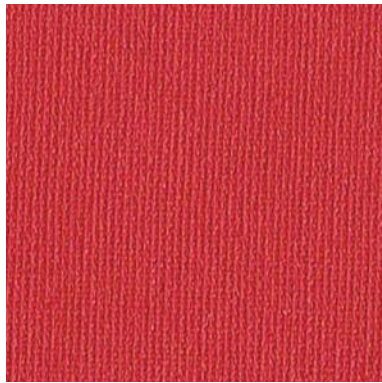
Dark Grey



Light Grey



White



Red



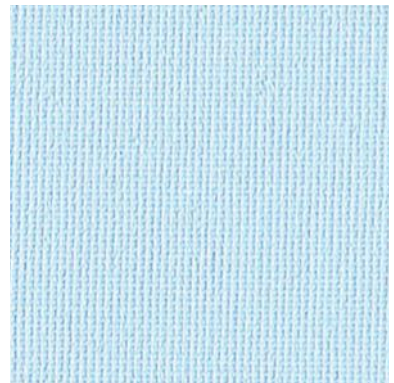
Dark Green



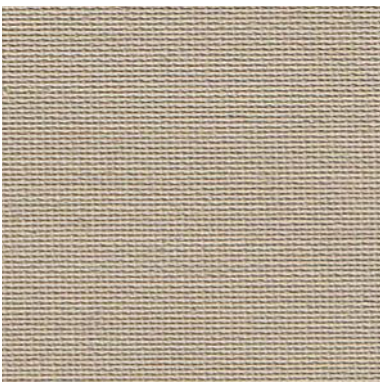
Yellow



Royal



Light Blue



Dark Beige



Beige



interlace

drawing on experience