



# Privacy FR | Blind Fabric

Roller Blinds | Vertical Louvre Blinds

# Privacy FR | Fabric Specification

**Privacy FR** is a technically advanced fabric developed for complete light exclusion. The fibreglass core gives stability and the PVC double-sided coating provides a very tough surface for demanding environments. This is used on roller blinds to provide a dim-out of around 80% or on framed roller blinds to give 99% blackout.

A full range of colours, its wipe-clean easy maintenance and **Biosafe**® anti-bacterial properties makes this range ideal for specification and use across a broad scope of projects, particularly

- AV Rooms and boardrooms
- Laboratories and school science and drama rooms
- Medical and healthcare institutions

**HELPFUL TIP!** The characteristics and performance of the blinds does not particularly depend on the colour chosen from this range. Darker colours will reduce internal reflection of stray light, but they absorb and transmit heat more than lighter colours. Lighter colours are excellent at rejecting heat but under bright conditions can sometimes give a slight shadow through the fabric. If you need advice in specifying call the InterLace sales office on **0800 619 6999** for advice or email your requirements to [sales@interlaceblinds.com](mailto:sales@interlaceblinds.com).

**HELPFUL TIP!** Horizontal fabric joins will be introduced where both dimensions of a blind exceed the maximum usable width of the fabric. The joins will normally be situated as near to the top of the blind as

possible. Joins are visible and are either stitched or heat welded. If you have a particular query about having joins on your blinds please call the InterLace sales office on **0800 619 6999** for advice or email your requirements to [sales@interlaceblinds.com](mailto:sales@interlaceblinds.com).

<b>Fabric Composition</b>	4-ply; 75% PVC, 25% Fibreglass
<b>Louvre Widths</b>	127mm (5") / 89mm (3.5")
<b>Roller Fabric Width</b>	1830mm 2500mm
<b>Fabric Thickness</b>	0.25mm - 0.33mm
<b>Fabric Weight</b>	407 g/m2 - 12oz/syd
<b>Fire Retardancy</b>	Conforms to BS5867, Part 2: Type B 2008
<b>Shading</b>	Blackout. Suitable for computer environments
<b>Moisture Resistance</b>	Suitable for moist conditions
<b>Care Instructions</b>	Wipe clean

Colour	Solar Transmittance %	Optical Transmittance %	Solar Reflection %	Ultraviolet Protection %	Absorption %	Sun Block %
BlackWhite	0	0	73	100	27	100
Sea Blue	0	0	64	100	36	100
Bottle Green	0	0	8	100	92	100
Burgundy	0	0	17	100	83	100
Navy	0	0	9	100	91	100
Black	0	0	5	100	95	100
Dark Grey	0	0	29	100	71	100
Grey	0	0	49	100	51	100
Mint Green	0	0	66	100	34	100
White	0	0	73	100	27	100
Magnolia	0	0	60	100	40	100
Beige	0	0	65	100	35	100
Black & White	0	0	66	100	34	100

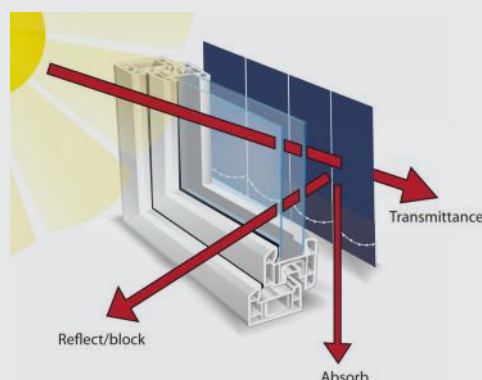
## Shading Efficiency

**Transmittance** is the amount of light and heat transmitted beyond the fabric. The lower the amount, the greater the efficiency.

**Block/reflect** is the amount of heat and light that is blocked or reflected. The higher the amount, the greater the efficiency.

**Absorption** is the amount of heat and light absorbed in the fabric. The higher the amount, the lower the efficiency.

**Ultraviolet** protection illustrates how protective the fabric is in protecting against ultraviolet rays. The higher the amount, the greater the effectiveness.

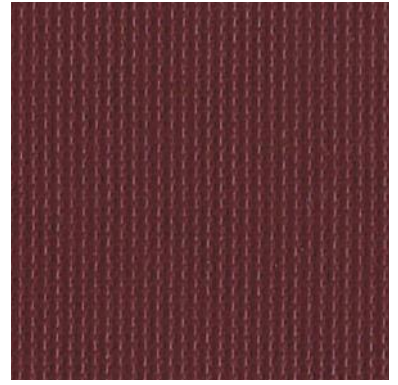




Light Blue



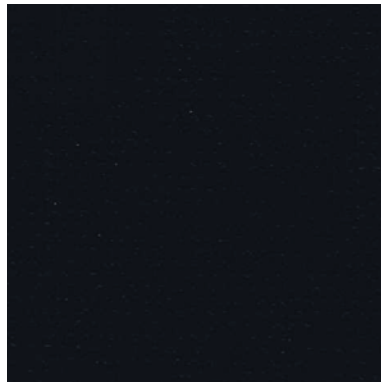
Dark Green



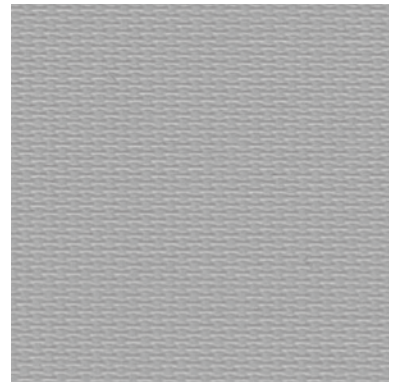
Burgundy



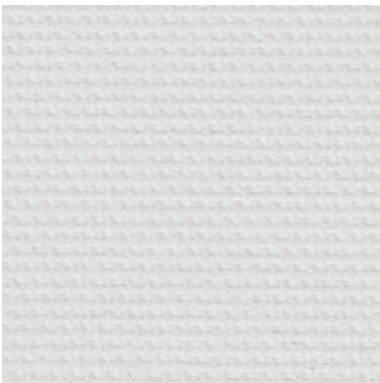
Dark Blue



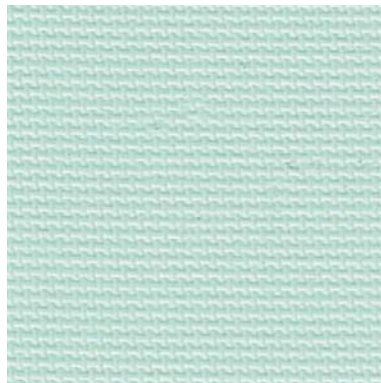
Black



Dark Grey



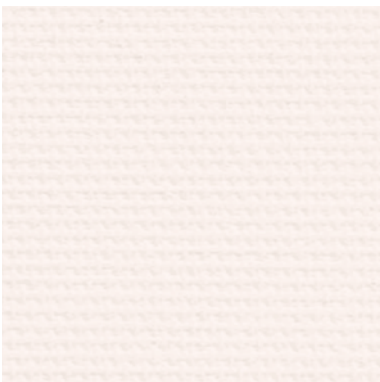
Light Grey



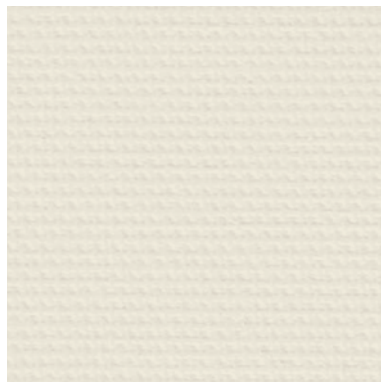
Light Green



White



Cream



Beige



Black & White



**interlace**

drawing on experience